



Commercial Front Plow System

# F12 / F14 Parts Manual



# DECALS

Decals

Sno-Power

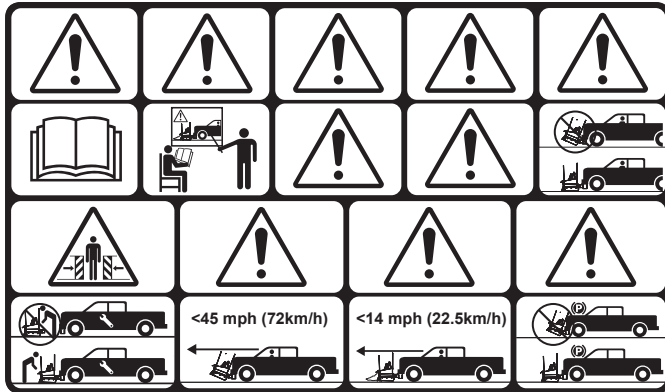
---

	<b>Part Number</b>	<b>Description</b>	<b>Quantity</b>		<b>Part Number</b>	<b>Description</b>	<b>Quantity</b>
1	SP-D-TPC	Transport Caution Decal	1	7	SP-D-HCS	Hitch Connection Switch Decal	1
2	SP-D-MIM	Made in Michigan Decal	1				
3	SP-D-Caution	Yellow Caution Decal	1	8	SP-D-HPNC	High Pressure Nitrogen Cylinders Decal	9
4	SP-D-CTC	Coupler Tower Decal	2				
5	SP-D-MP	Mounting Procedure Decal	2	9	SP-D-PAA	Plow Angle Adjustment Decal	1
6	SP-D-FPP	Pinch Point Decal	2				

⚠ WARNING	
	Lower blade when vehicle is parked.
	Do not exceed GVWR or GAWR including blade and ballast.
⚠ CAUTION	
	Read Owner's Manual before operating or servicing snowplow.
	Transport speed should not exceed 45 mph (72km/h). Further reduce speed under adverse travel conditions.
	Plowing speed should not exceed 10 mph - 14 mph (16km/h to 22.5 km/h).
<b>WWW.</b>	See your sales outlet/Web site for specific vehicle application recommendations.



⚠ CAUTION	
<p>To mount the plow to the truck twist the spring pin to engage the pin, locking into position. To remove the plow from the truck. Pull pin and twist to disengage pin locking pin into out position.</p>	



SNOWPLOW MOUNTING PROCEDURE	
<p><b>STEP 1</b></p> <ul style="list-style-type: none"> <li>Turn off the handhold controller.</li> </ul>	<p><b>STEP 2</b></p> <ul style="list-style-type: none"> <li>Line up the vehicle with the snowplow and drive towards the snowplow until the pin contacts the push beam.</li> <li>Remove the electrical plug dust covers. Connect the electrical plugs.</li> </ul>
<p><b>STEP 1</b></p> <ul style="list-style-type: none"> <li>Retract both wings back towards the vehicle and put the plow down and turn the handhold controller off.</li> <li>Lower the kickstands on the wings in the lowest position possible.</li> <li>Push the hitch connection switch towards the truck to raise the coupler tower and release the spring pins.</li> </ul>	<p><b>STEP 2</b></p> <ul style="list-style-type: none"> <li>Push the hitch connection switch towards the snowplow until the coupler tower completely lowers to the snowplow.</li> <li>Disconnect the electrical plugs and install the electrical plug dust covers.</li> <li>Back the vehicle away from the snowplow slowly.</li> </ul>



Hitch Connection Switch	UP ↑
	DOWN ↓

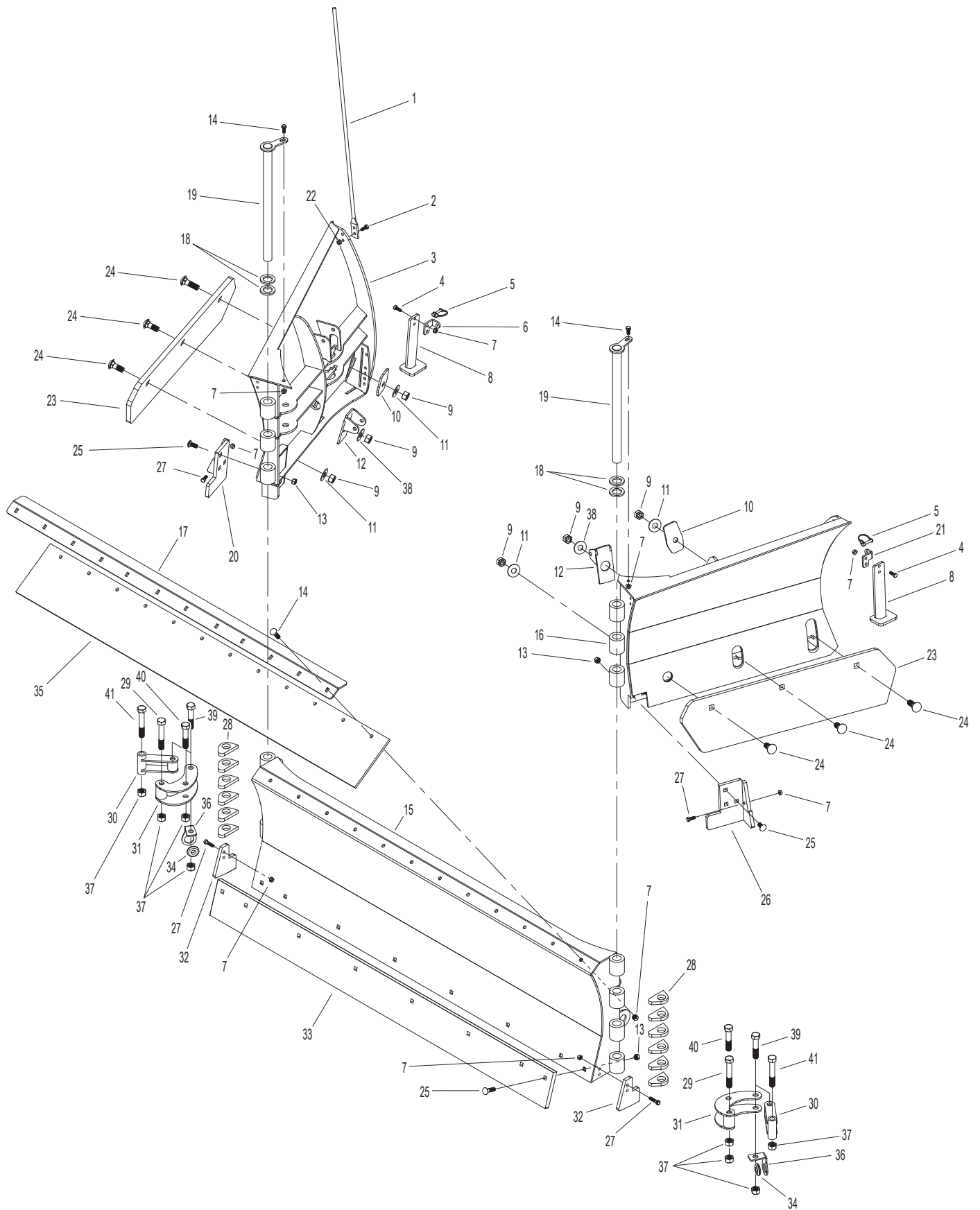
	DO NOT APPLY HEAT OR FLAME. EXPLOSION & INJURY MAY OCCUR.
	WARNING: OIL & GAS UNDER HIGH PRESSURE
⚠ DO NOT OPEN ⚠	
375 W Hackley Ave Muskegon Heights, MI 49444 Multiple US Patents Pending	

<p>SCAN ME</p>		<p><b>HIGHER NUMBER = HIGHER WING EDGES</b></p>
<p>Scan QR Code for Operator's Manual Detailed Instructions &amp; Warnings Refer To Page 19</p>		<p><b>LOWER NUMBER = LOWER WING EDGES</b></p>

**BLADE ASSEMBLY**

Blade Assembly			Sno-Power				
Part Number	Description	Quantity	Part Number	Description	Quantity		
1	SP-17045PM	Plow Markers (Sold in Pairs)	22	37021	5/16"-18 Nylock Nut	8	
2	13057	5/16"-18 x 1" Bolt	8	23	SP-FWCE	Wing Cutting Edge AR	2
3	SP-F12A	Right (Passenger) Wing	1	24	167184	3/4"-10 x 2" Shaker	6
4	10366-05959	3/8"-16 x 1" Flange Serrated	4	25	0167158	1/2"-13 x 1-1/2" Shaker Screen Bolt	14
5	120678	3/8" x 1-3/8" Snapper Pin	2	26	SP-FPHCE	Left (Driver) Hinge Cutting Edge	1
6	SP-PKSB	Right (Passenger) Kick Stand Bracket	1	27	19709	3/8"-16 x 1-1/2" Hex Serrated Flange Bolt	6
7	37341	3/8"-16 Serrated Flange Nut	24	28	SP-F1002 (F12)	Hinge Limit Stop	12
8	SP-KSTAND	Kick Stand	2	28	SP-F1004 (F14)	Hinge Limit Stop	12
9	37274	3/4"-10 Top Lock Nut	6	29	12373	3/4"-10 x 5" Hex Cap Screw	2
10	SP-FDW	3/8" Diamond Washer	2	30	SP-F21027	Front Bell Crank Lever	2
11	SP-MB916	Medium Bushing 9/16"	4	31	SP-F21026	Front Bell Crank	2
12	SP-FCB	Cutting Edge Cylinder Bracket (Shoe)	2	32	SP-FCHCE	Center Hinge Cutting Edge	2
13	95915	1/2"-13 Serrated Flange Nut	14	33	SP-F-12CPE (F12)	Center Plow Cutting Edge AR	1
14	21944	3/8"-16 x 1-1/4" Carriage Bolt	14		SP-F-14CPE (F14)	Center Plow Cutting Edge AR	1
15	SP-F12	Center Moldboard	1	34	5187	Rubber Grommet	2
	SP-F14	Center Moldboard	1	35	SP-F12SD (F12)	Snow Deflector	1
16	SP-F12B	Left (Driver) Wing	1		SP-F14SD (F14)	Snow Deflector	1
17	SP-F12DB (F12)	Snow Guard Deflector Bracket	1	36	SP-FHHB	Main Board Hydraulic Hose Bracket	2
	SP-F14DB (F14)	Snow Guard Deflector Bracket	1	37	37190	3/4"-10 Nylock Nut	6
18	SP-FWPS	Wing Pin Shim	4	38	SP-LB78	Large Bushing 7/8"	2
19	SP-FP17007-1	Front Hinge Pin	2	39	12371	3/4"-10 x 4-1/2" Hex Cap Screw	2
20	SP-FPHCE	Right (Passenger) Hinge Cutting Edge	1	40	12369	3/4"-10 x 4" Hex Cap Screw	2
				41	12375	3/4"-10 x 6" Hex Cap Screw	2
21	SP-DKSB	Left (Driver) Kick Stand Bracket	1				

# BLADE ASSEMBLY



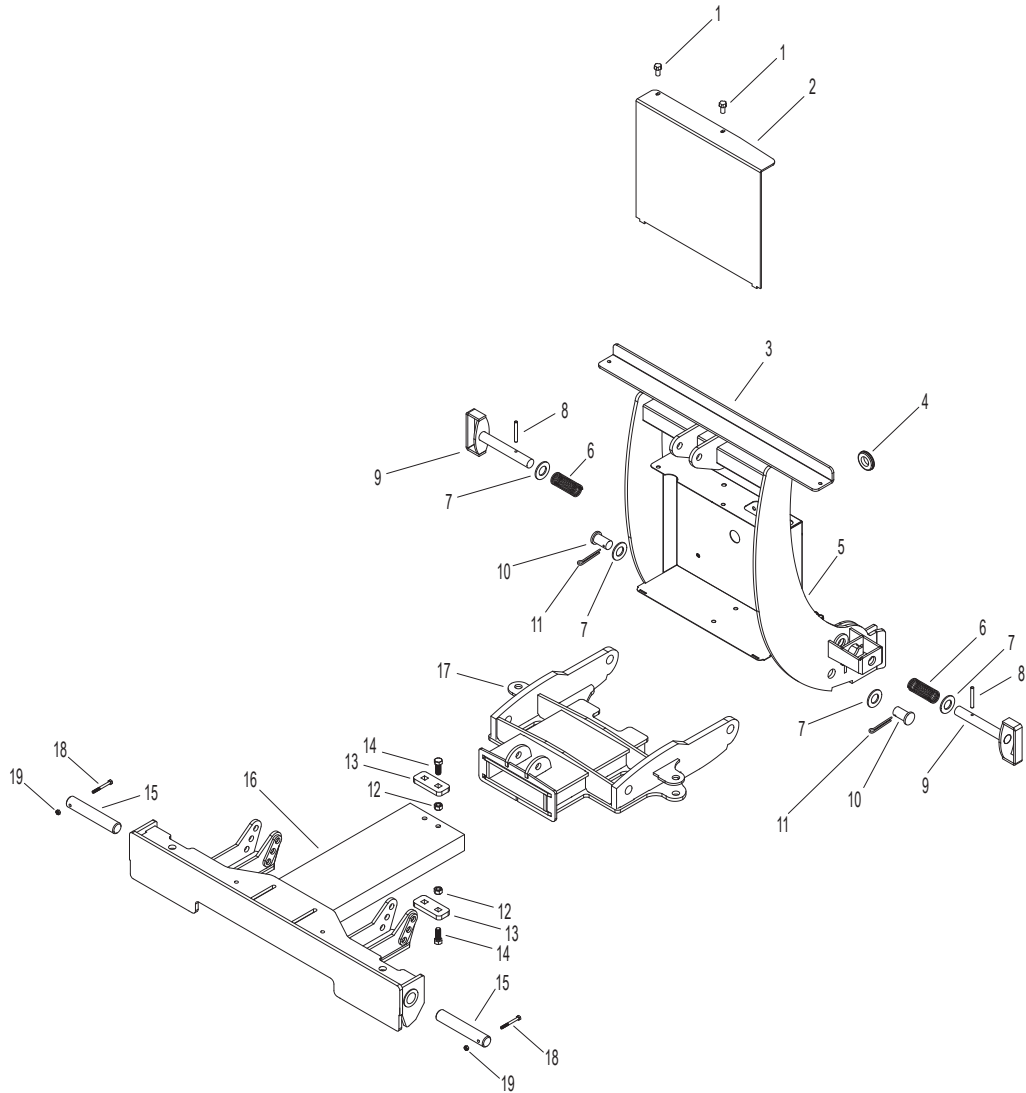
# TOWER ASSEMBLY

Tower Assembly

Sno-Power

Part Number		Description	Quantity	Part Number		Description	Quantity
1	SP-15313	1/4-20 x 3/4" Knob	2	11	156983	Zinc Hitch Pin Clip	2
2	SP-HPC	Hydraulic Power Pack Cover	1	12	95915	1/2"-13 Serrated Flange Nut	4
3	SP-CTLB	Coupler Tower Light Bracket	1	13	SP-FTPS	Telescopic Stop	2
4	5187	Rubber Grommet	1	14	11589505	1/2"-13 x 1-1/4" Serrated Flange Bolt	4
5	SP-CT-0010B	Coupler Tower (Boss Undercarriage)	1	15	SP-FP21010	Plow Pivot Pin	2
6	SP-17015	Coupler Spring	2	16	SP-FP005	Telescopic Push Frame	1
7	11122068	1" x 1-1/2" 10GA Bushing	4	17	SP-FP004	Push Frame Receiver	1
8	74333	Roll Pin	2	18	15013	1/4"-20 x 2-1/2"	2
9	SP-F1007	Coupler Spring Pin	2	19	37018	Hex Cap Screw	2
10	120653	1" x 2-1/2" Clevis Pin	2			1/4"-20 Nylock Nut	2

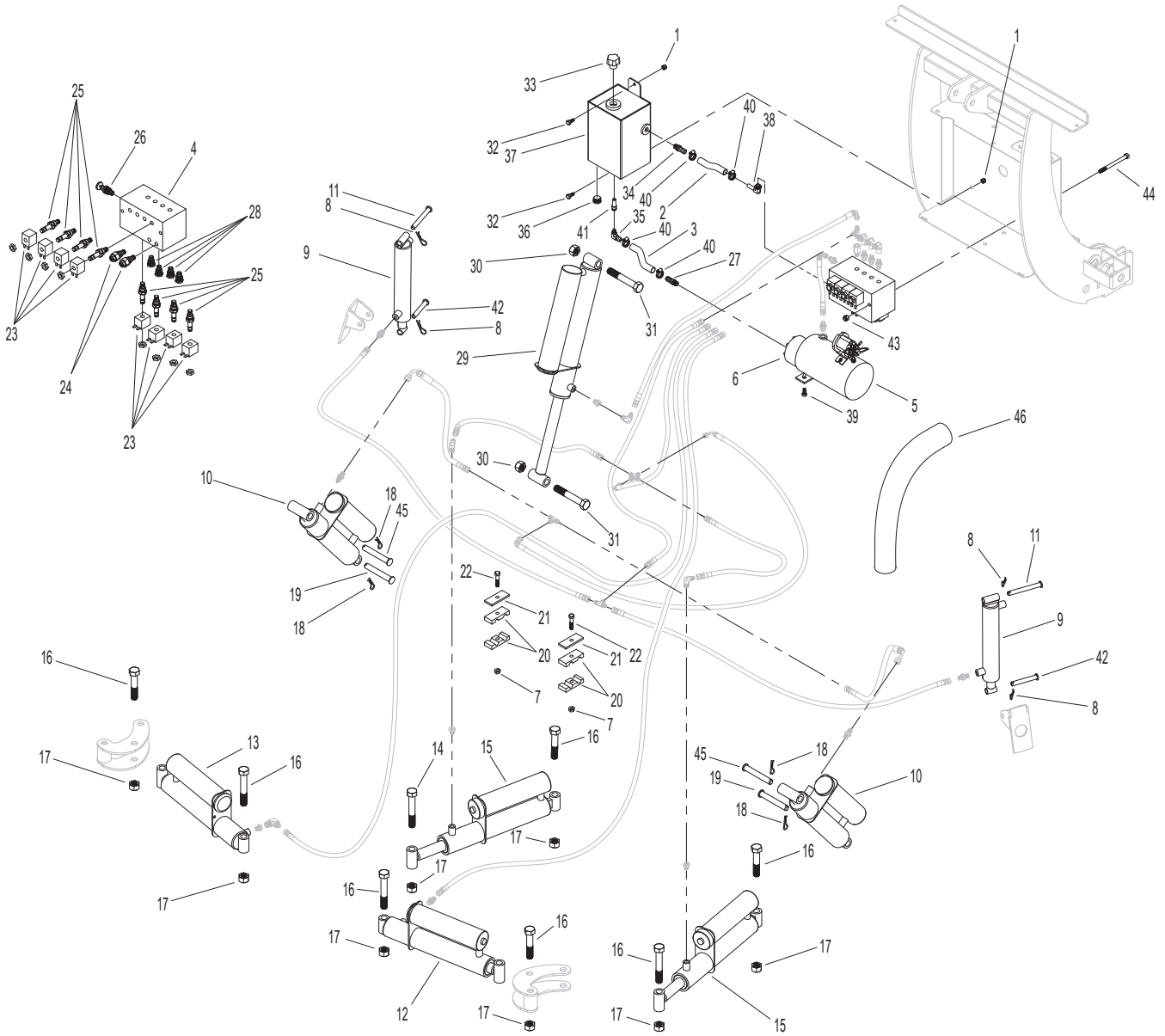
# TOWER ASSEMBLY



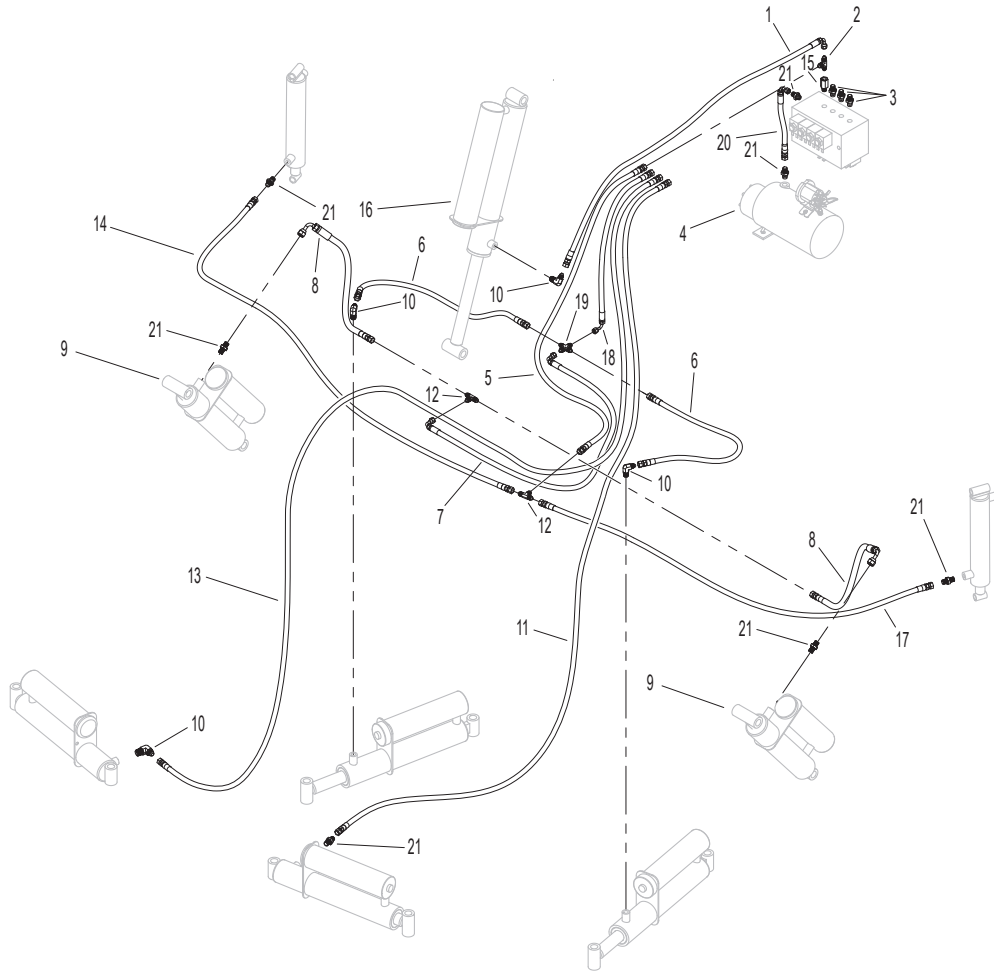
## HYDRAULIC COMPONENTS

Part Number	Description	Quantity	Part Number	Description	Quantity		
1	95911	1/4"-20 Serrated Flange Nut	2	19923	5/16"-18 x 2-1/4" Bolt	2	
2	SP-FHTS	Hydro Tank Side Hose	1	23	SP-F21PU-5	Hydro Coil	8
3	SP-FHTB	Hydro Tank Bottom Hose	1	24	SP-F21PU-2	Relief Valve	2
4	SP-F21PU-1	Hydro Manifold	1	25	SP-F21PU-4	Hydro Cartridge	8
5	SP-F21MTR	Front Hydraulic Motor	1	26	SP-F21PU-6	Valve Flow Knob	1
6	SP-F21PMP	Front Hydraulic Pump	1	27	SP-HF6	Barb Hose Fitting (Pump)	1
7	37339	5/16"-18 Nylock Nut	2	28	SP-F21PU-3	Poppet Check Valve	4
8	65103	5/32" x 1" Cotter Pin	4	29	SP-FLC-1	Lift Cylinder W/Accum	1
9	SP-FCE	Cutting Edge Cylinder	2	30	37188	5/8"-11 Nylock Nut	2
10	SP-FTC	Trip Cylinder W/Accumulator	2	31	15323	5/8"-11 x 5" Hex Cap Screw	2
11	66121	Upper Cutting Edge Cylinder Pin	2	32	11589191	1/4"-20 x 3/4" Hex Serrated Flange Bolt	2
12	SP-FDWC	Left Wing Cylinder W/Accumulator	1	33	SP-HTC	Hydro Tank Filler Cap	1
13	SP-FPWC	Right Wing Cylinder W/Accumulator	1	34	SP-HF9	Hose Barb 1/2 (Tank)	1
14	12371	3/4"-10 x 4-1/2" Hex Cap Screw	1	35	SP-HF7	1/2 Hose Elbow (Tank)	1
15	SP-FPC	Push Cylinder W/Accumulator	2	36	SP-21MDP	Magnetic Drain Plug	1
16	12369	3/4"-10 x 4" Hex Cap Screw	7	37	SP-HTANK	Hydro Tank	1
17	37190	3/4"-10 Nylock Nut	8	38	SP-HF8	1/2 Hose Elbow (Manifold)	1
18	156983	Zinc Hitch Pin Clip	4	39	10366-05959	3/8"-16 x 1" Flange Serrated	1
19	66152	Lower Trip Cylinder Pin	2	40	427992	Oetiker Clamp	4
20	SP-FHDL (F12)	Hose Cushion	2	41	SP-HTS	Hydro Tank Suction Strainer	1
	SP-FHDL (F14)	Hose Cushion	3	42	66120	Lower Cutting Edge Cylinder Pin	2
21	SP-FHDB (F12)	Hose Hold Down Bracket	2	43	37185	3/8"-16 Nylock Nut	2
	SP-FHDB (F14)	Hose Hold Down Bracket	3	44	12121	3/8"-16 x 4-1/2" Hex Cap Screw	1
				45	66154	Upper Trip Cylinder Pin	2
				46	SP-AS49	Hose Sleeve	1





<b>Part Number</b>	<b>Description</b>	<b>Quantity</b>	<b>Part Number</b>	<b>Description</b>	<b>Quantity</b>		
1	SP-FLH-18	Hydraulic Lift Hose - 18	1	12	SP-HF3	Hydraulic Tee	2
2	SP-HF2	Run Tee	1	13	SP-FPWH-82 (F12)	Right Wing Hose	1
3	SP-HF4	90° Hose Fitting - Tall	3		SP-FPWH-108 (F14)	Right Wing Hose	1
4	SP-F21PMP	Front Hydraulic Pump	1	14	SP-FPSC-75 (F12)	Hydraulic Lift Hose - 75	1
5	SP-FLCH-51 (F12)	Hydraulic Lift Hose - 51	1		SP-FPSC-93 (F14)	Hydraulic Lift Hose - 93	1
	SP-FLCH-56 (F14)	Hydraulic Lift Hose - 56	1	15	SP-HF1	Hydraulic Adapter	1
6	SP-FPH-23	Hydraulic Push Hose - 23	2	16	SP-FLC-1	Lift Cylinder W/Accum	1
7	SP-FTMH-46	Hydraulic Push Hose - 46	1	17	SP-FDSC-40	Hydraulic Lift Hose - 40	1
8	SP-FTH-17	Hydraulic Push Hose - 17	2	18	SP-FPCH-29	Hydraulic Push Hose - 29	1
9	SP-FTC	Trip Cylinder	2	19	SP-HF11	Cross Fitting	1
		W/Accumulator		20	SP-FPUH-9	Power Unit Hose	1
10	SP-HF10	90° Hose Fitting	4	21	SP-HF5	Straight Hose Fitting	7
11	SP-FDWH-51 (F12)	Left Wing Hose	1				
	SP-FDWH-56 (F14)	Left Wing Hose	1				

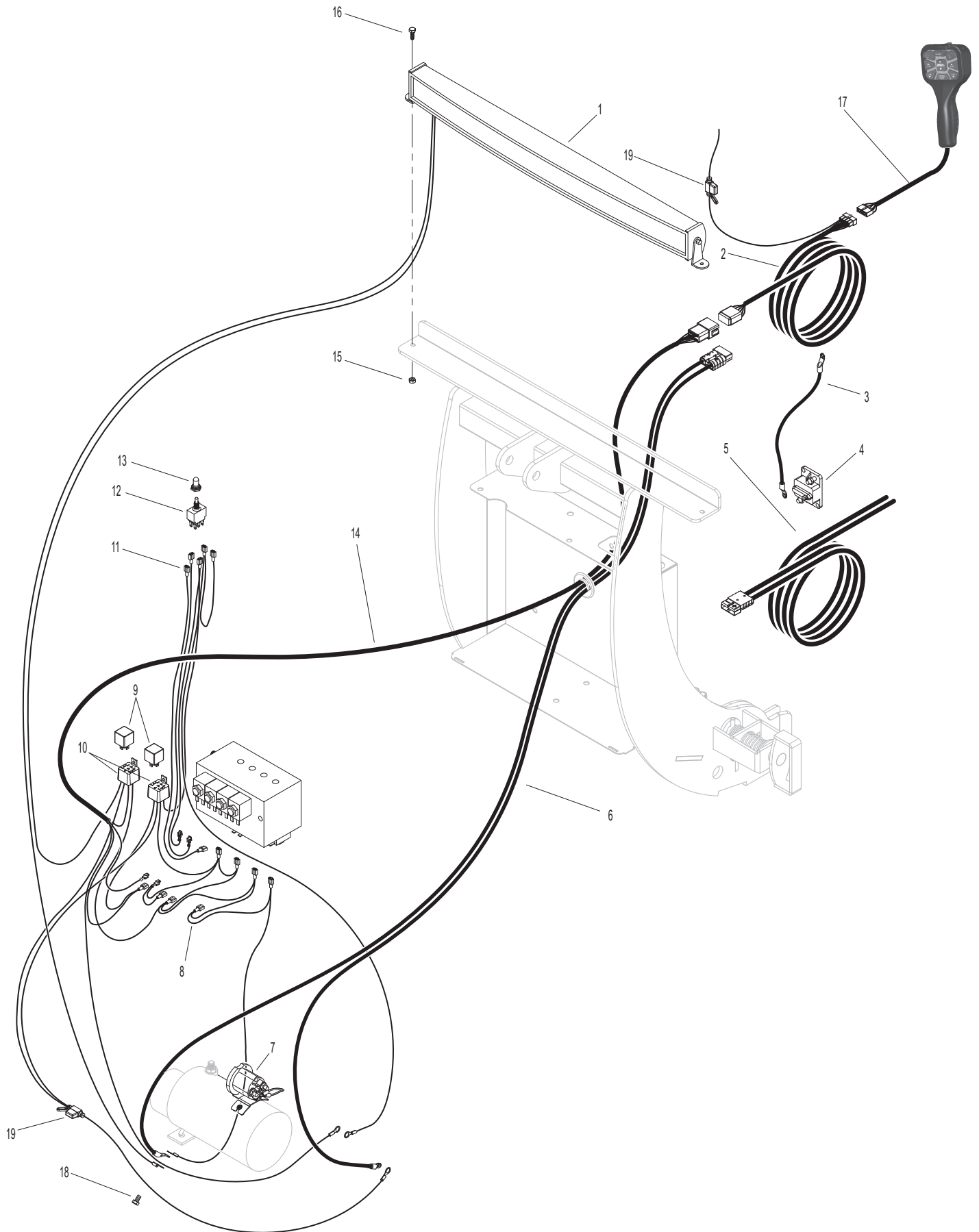


# ELECTRICAL

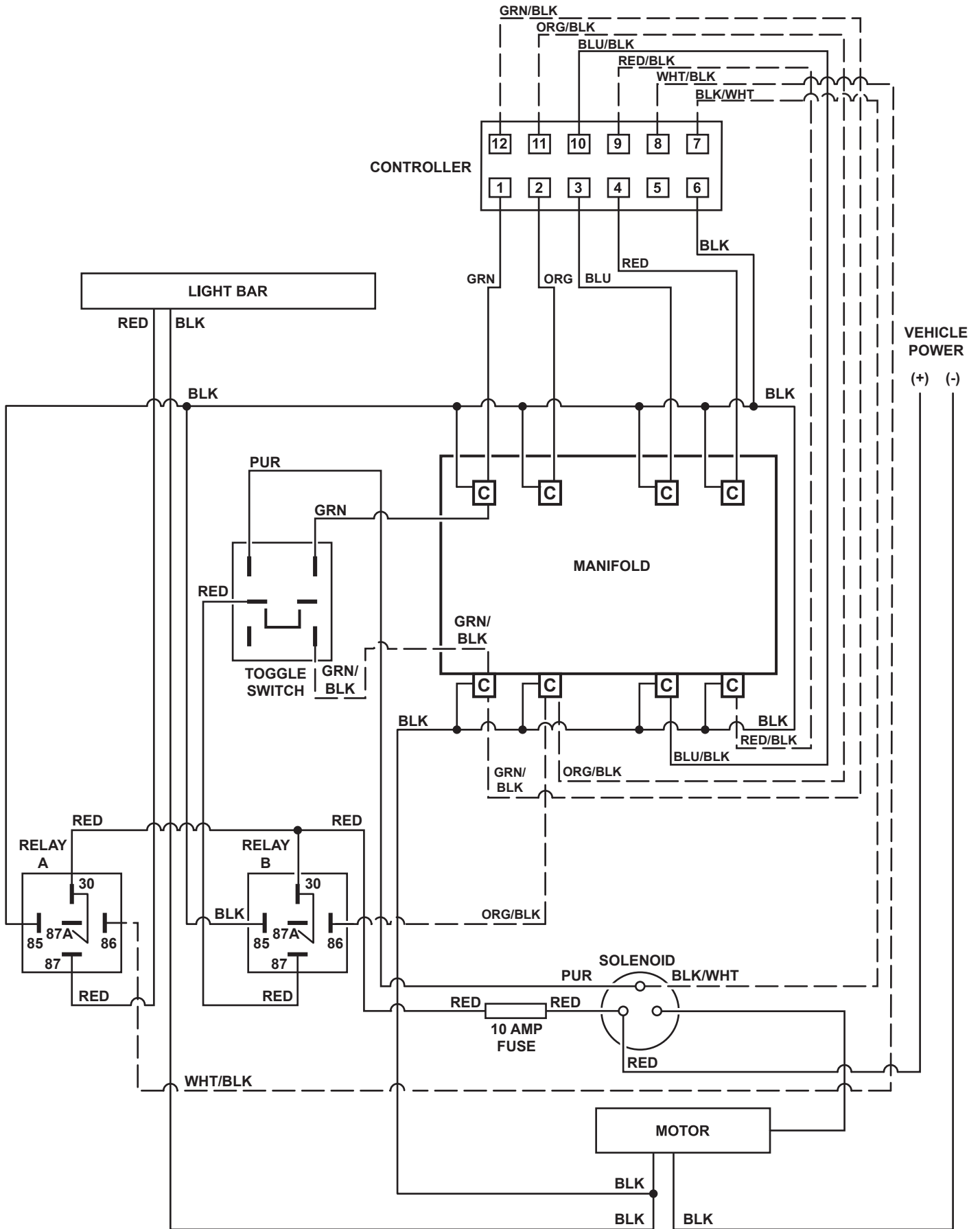
Electrical

Sno-Power

<b>Part Number</b>	<b>Description</b>	<b>Quantity</b>	<b>Part Number</b>	<b>Description</b>	<b>Quantity</b>		
1	SP-FLB-1	Lightbar	1	12	SP-F21PU-10	Hitch Connection Switch	1
2	SP-FTCW18	Truck Control Wire	1	13	SP-SWC	Switch Cover	1
3	SP-W4	Positive Breaker Cable	1	14	SP-FPCW4	Plow Control Wire	1
4	SP-17030	200 Amp Circuit Breaker	1	15	95911	1/4"-20 Flange Nut	2
5	SP-W90	Truck Heavy Power Cable	1	16	11589191	1/4"-20 x 3/4"	2
6	SP-W48	Plow Heavy Power Cable	1			Hex Cap Screw	
7	SP-17PPU12	Solenoid	1	17	SP-21HHC	SnoPower Handheld	1
8	SP-GWH	Ground Wiring Harness	1			Controller	
9	SP-RLY	Relay	2	18	32416	5/16"-18 x 3/4"	1
10	SP-RSKT	Relay Socket	2			Hex Cap Screw	
11	SP-SWH	Switch Wiring Harness	1	19	SP-FCF	10 Amp ATC Fuse	2



# SCHEMATIC





**Muskegon, MI**